

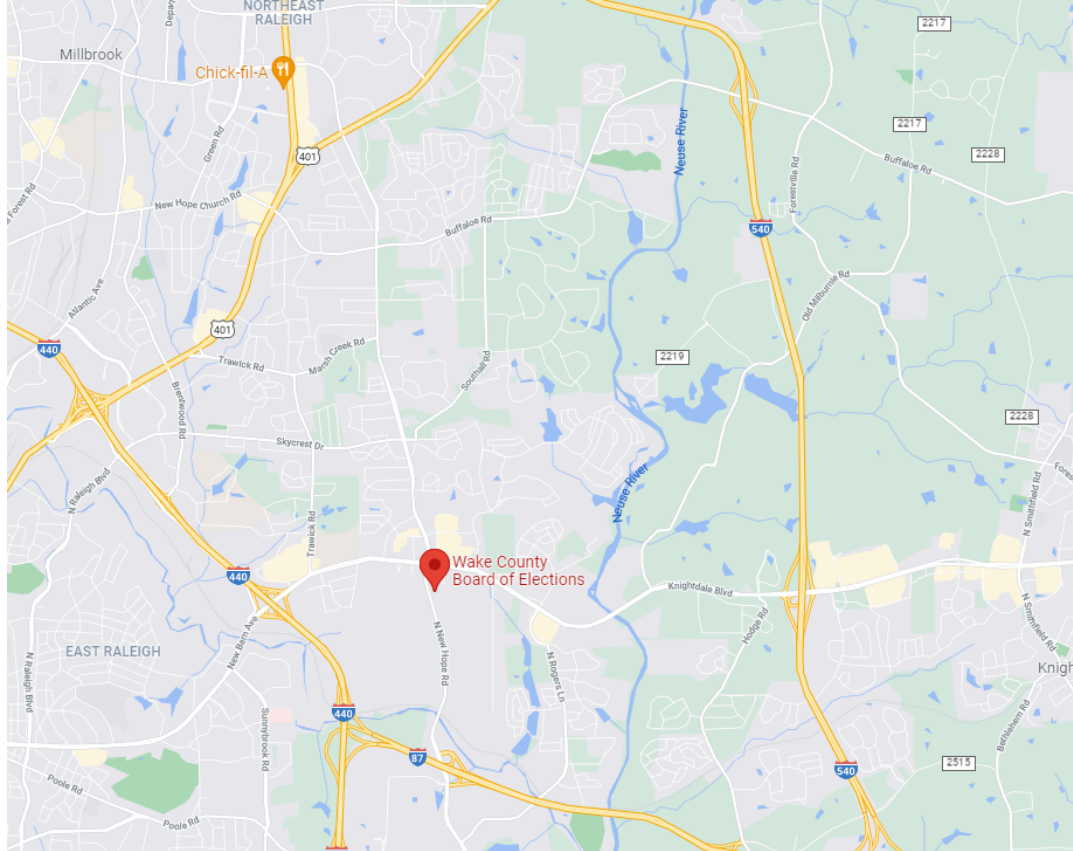


Wake County Facility
City of Raleigh

Enclosure Size
2,000 sqft

Parking Spaces
150

Curbside Spaces
5



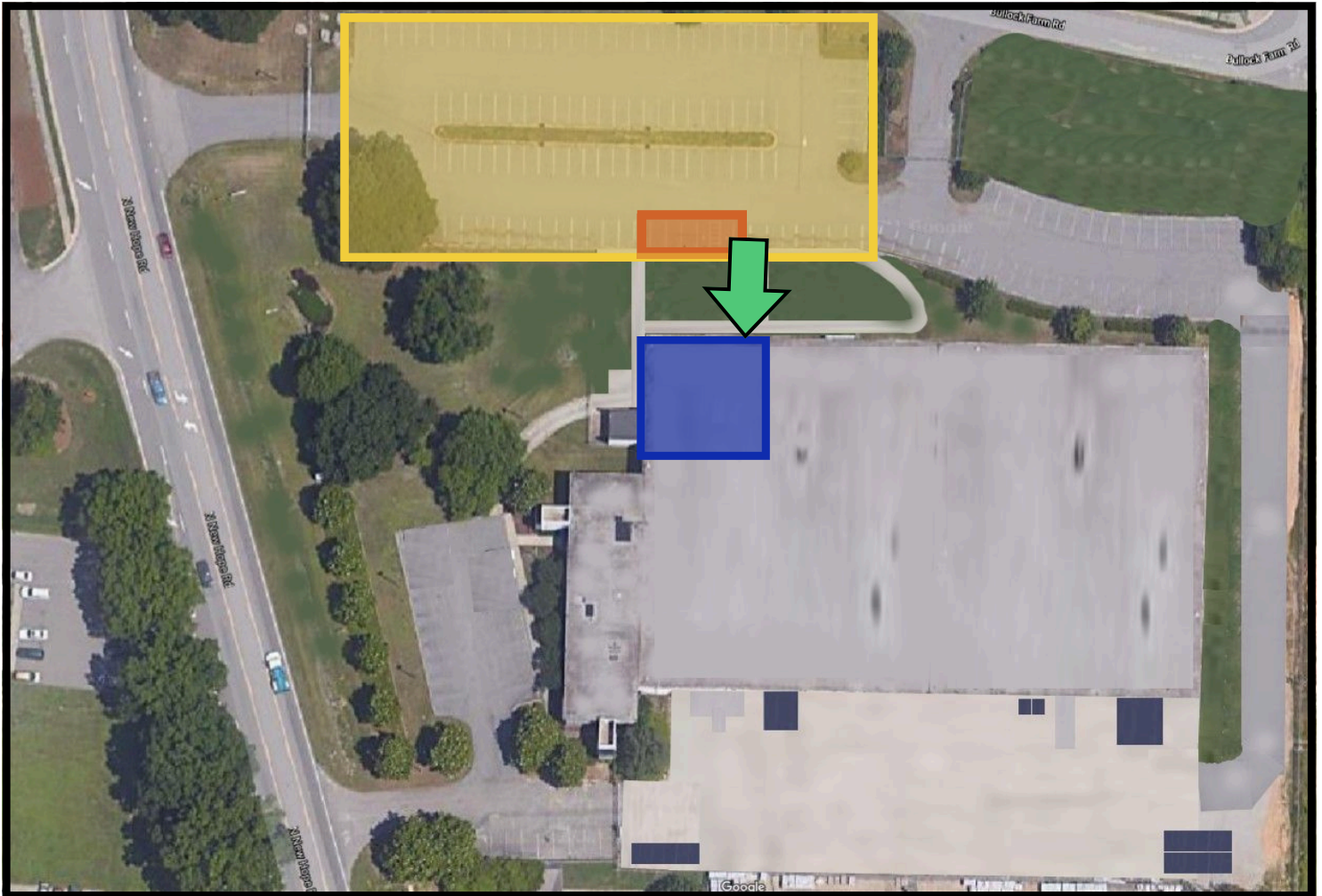
Wake County Board of Elections Office

1200 N. New Hope Rd., Raleigh, NC 27610



Wake County Board of Elections Office

1200 N. New Hope Rd., Raleigh, NC 27610

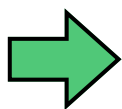


Legend

Voter Parking

Curbside Parking

Voting Enclosure



Voter Entrance

Voter Entrance: Voters enter through the side door closest to voter parking.

Buffer Zone: Extends 50 feet from the door at the Voter Entrance.

Wake County Board of Elections

Permitted Early Voting Campaigning/Signage Zones

Legend

- No Signs or Campaigning Permitted
- Campaigning Permitted
- Signs Permitted
- ⌞ Voter Entrance

§ 163-166.4. Limitation on activity in the voting place and in a buffer zone around it.

(a) Buffer Zone. – No person or group of persons shall hinder access, harass others, distribute campaign literature, place political advertising, solicit votes, or otherwise engage in election-related activity in the voting place or in a buffer zone which shall be prescribed by the county board of elections around the voting place. In determining the dimensions of that buffer zone for each voting place, the county board of elections shall, where practical, set the limit at 50 feet from the door of entrance to the voting place, measured when that door is closed, but in no event shall it set the limit at more than 50 feet or at less than 25 feet.

(b) Area for Election-Related Activity. – Except as provided in subsection

(c) of this section, the county board of elections shall also provide an area adjacent to the buffer zone for each voting place in which persons or groups of persons may distribute campaign literature, place political advertising, solicit votes, or otherwise engage in election-related activity.

