



Town of Cary

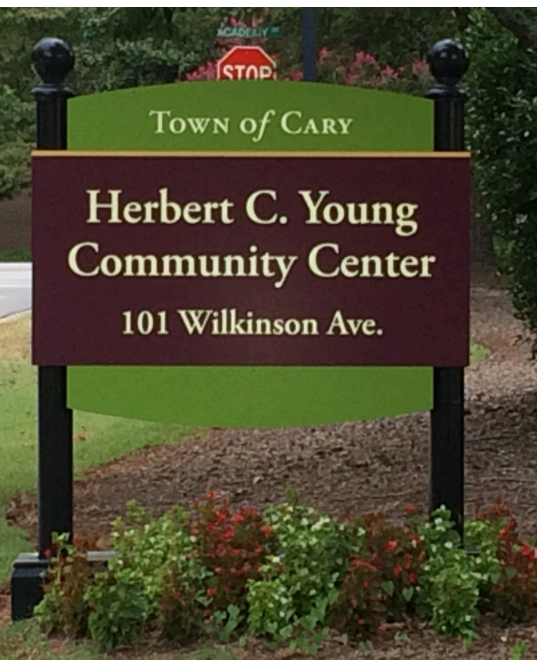
Enclosure Size
10,285 sqft

Parking Spaces
100+

Curbside Spaces
5

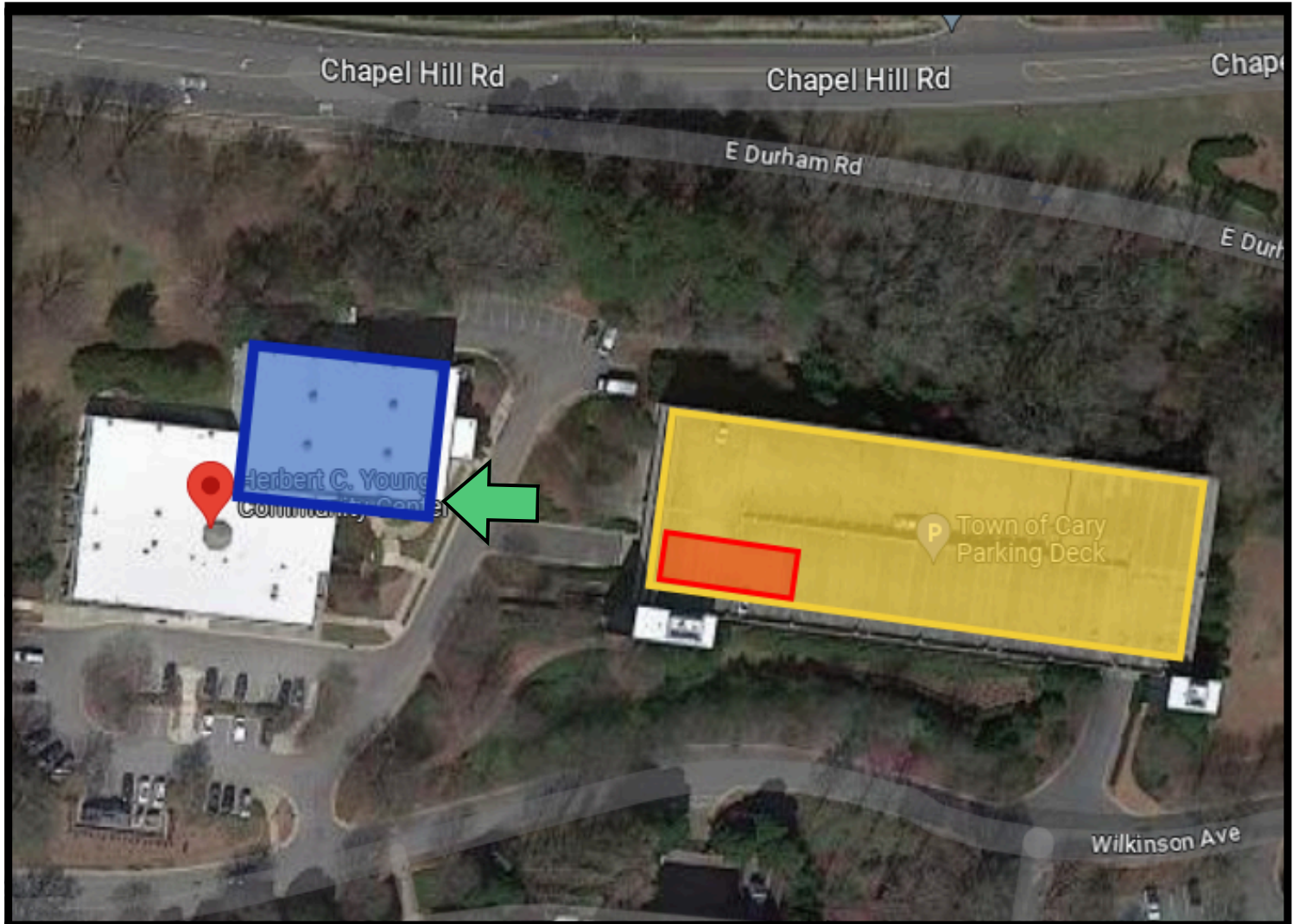
Herbert C. Young Community Center

101 Wilkinson Ave., Cary, NC 27513



Herbert C. Young Community Center

101 Wilkinson Ave., Cary, NC 27513



Legend

Voter Parking

Curbside Parking

Voting Enclosure

➔ Voter Entrance

Voter Entrance: Voters enter through side doors closest to voter parking.

Buffer Zone: Extends 50 feet from the door at the Voter Entrance.

Memo

Date: October 1, 2024

To: Olivia McCall, Director of Wake County Board of Elections

From: Julie Clifton, Deputy Town Clerk

Executive Summary:

This memo is designed to clearly designate the “Area for Election-Related Activity” (“ERA Area”) at voting places located on Town property during the October 17 – November 2, 2024 General Election early voting. The following voting sites are located on Town property:

- Herb Young Community Center
- Cary Senior Center

Background:

Cary is honored to host early voting sites on Town-owned properties, and to work with the Board of Elections (“Board”) to facilitate the election process. We are aware that state law (Chapter 163, Article 14A, Part 3) specifies a number of requirements and procedures for the Board in the creation and operation of voting places. The Board must create a ‘buffer zone’ at each voting place and, where practical

set the limit at 50 feet from the door of entrance to the voting place, measured when that door is closed, but in no event shall it set the limit at more than 50 feet or at less than 25 feet.

Within this buffer zone (and the voting place)

No person or group of persons shall hinder, access, harass others, distribute campaign literature, place political advertising, solicit votes, or otherwise engage in election-related activity...

Adjacent to the required buffer zone, when the voting place is a public building, the Board must

provide an area ... in which persons or groups of persons may distribute campaign literature, place political advertising, solicit votes, or otherwise engage in election-related activity.

The extent of the election-related activity area adjacent to the buffer zone (“ERA Area”) has historically been established by the Town.

For this election, the Town proposes to clearly designate in advance of the election the area outside of voting places on Town property that can be used as ERA Area. Unless we hear objection from you or the Board, the Town will designate the highlighted areas on Exhibits A-B as the ERA Area for early voting at the Herb Young Community Center and the Cary Senior Center. We consider the ERA Area to be under the jurisdiction of the BOE, and it will not be subject to the Town’s sign ordinance. All questions or concerns about signs located in the ERA Area will be directed to the BOE. As in past elections, Town staff will remove all signs on Town property that are outside of the ERA Area and will place those removed signs in a nearby place designated by the Town for retrieval by their owners. Signs placed in public right-of-way will continue to be governed by Town ordinance or State law, depending on their

location.

Next Steps:

If there are no objections to Exhibits A-B for early voting, Town staff will this year and following continue the practice of identifying on plans like those attached the ERA Area for early voting at the Cary Senior Center and Herb Young Community Center as shown.

Exhibit A: Cary Senior Center, 120 Maury O'Dell Place, Cary

Exhibit B: Herb Young Community Center, 101 Wilkinson Ave, Cary

Exhibit B:

